



ISUN GROUP
GROW WITH SUN



Metal Beam Crash Barrier

Engineering | Manufacturing | Galvanizing | Services

Metal crash barriers are basically road safety system which prevents vehicles from colliding with obstacles such as boulders, walls, buildings and also prevents vehicles entering into large storms drains, steep slopes or deep water.

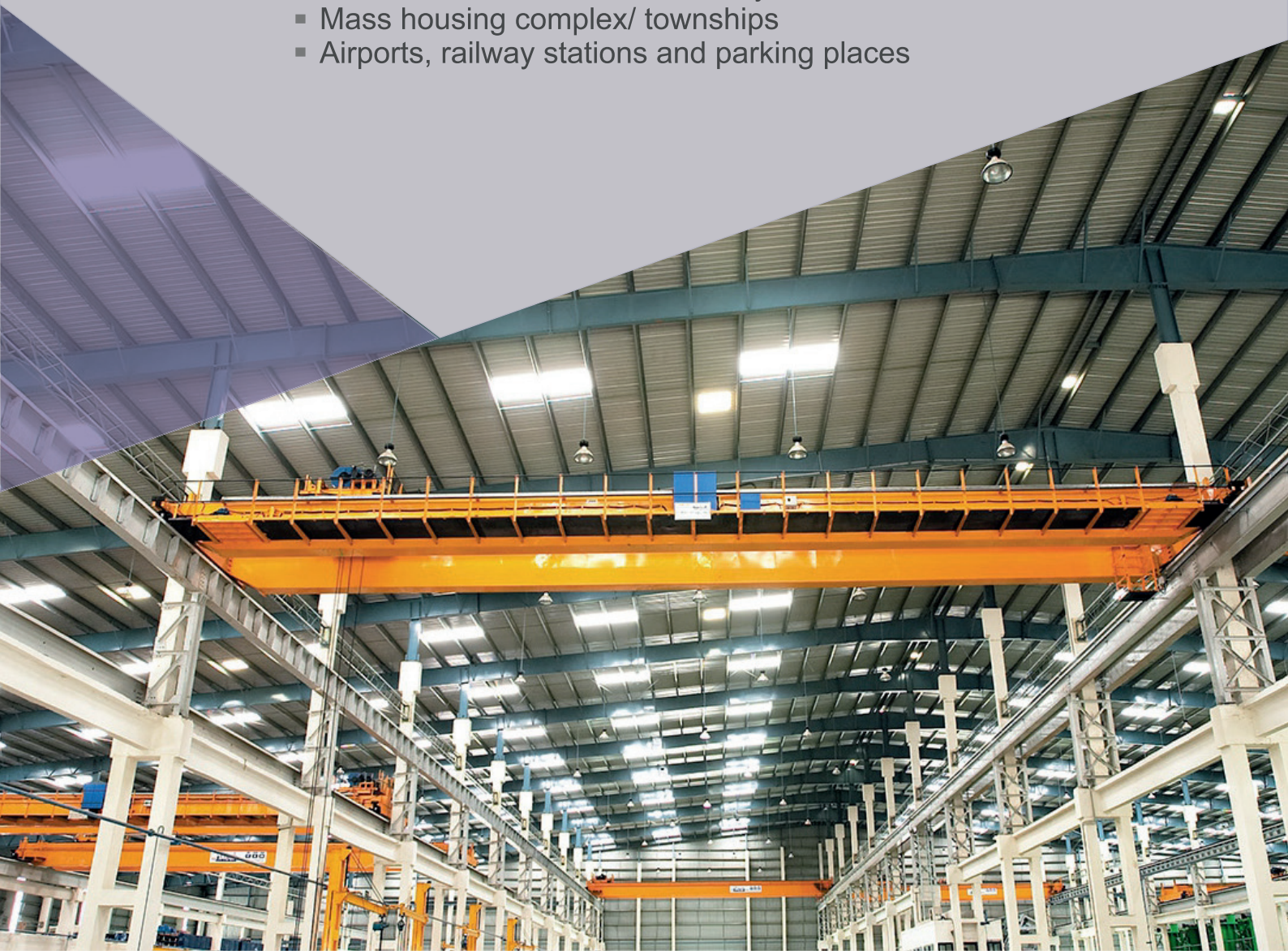
An Overview

ISUN GROUP – Setting Benchmarks Since 2016

Incepted in the year 2016 under the worthy and constructive guidance and support of highly energetic, enthusiastic and qualified group of engineers. Isun Group has successfully emerged and established itself as one of the top leading organizations in Infrastructure Company and road manufacturing. Spanned across multiple segments namely, Roads and Highway Development, Housing, and Metal Crash Barrier, PMB/ Emulsion, Road Sign Manufacturing, Isun Group is all set to venture into manufacturing and production of Metal Crash Barrier (Highway Guardrails) at domestic as well as International platter. Promoted, managed and operated by skilled, experienced, knowledgeable and successful professionals. Company is focused towards achieving "Safety Is our first priority" mantra.

Application

- Highways, expressways, roads and bridges
- High embankments/sharp curves
- High density fast moving traffic areas in cities
- Median barriers as road separators
- Protection from tress, rocky areas
- Hilly terrain, ghats, curves
- Test tracks in automobile Industry, factories and mines
- Mass housing complex/ townships
- Airports, railway stations and parking places



Mission, Vision & Values

Mission



Maintaining high standards of precision, quality and punctuality by demonstrating technical soundness and construction effectiveness in all our deliverables. To set new benchmarks for resource utilization and efficiency by conserving nature and enriching people's lives at large and creating value for stakeholders.

Vision



Our vision is to become market leaders in Road Safety Equipment business through strong focus on customer relationships along with quality and cost consciousness, and a concern for an environment and safety both in domestic and International market. To leave Indian footprints in global infrastructure industry backed by world class performance and operational excellence. To build its position among the most admired infrastructure companies in India & become the best-in-class service provider globally.

Values



Empowering human resources through professional ethics and integrity. Building trusting relationships with clients, stakeholders and society.



Our Product Range

Metal Beam Crash Barrier
W-Beam
Three Beam
Post, Spacer

Anchoring Systems
End Terminal
End Shoes
Fish Tail (Available in Indian & International Standard)



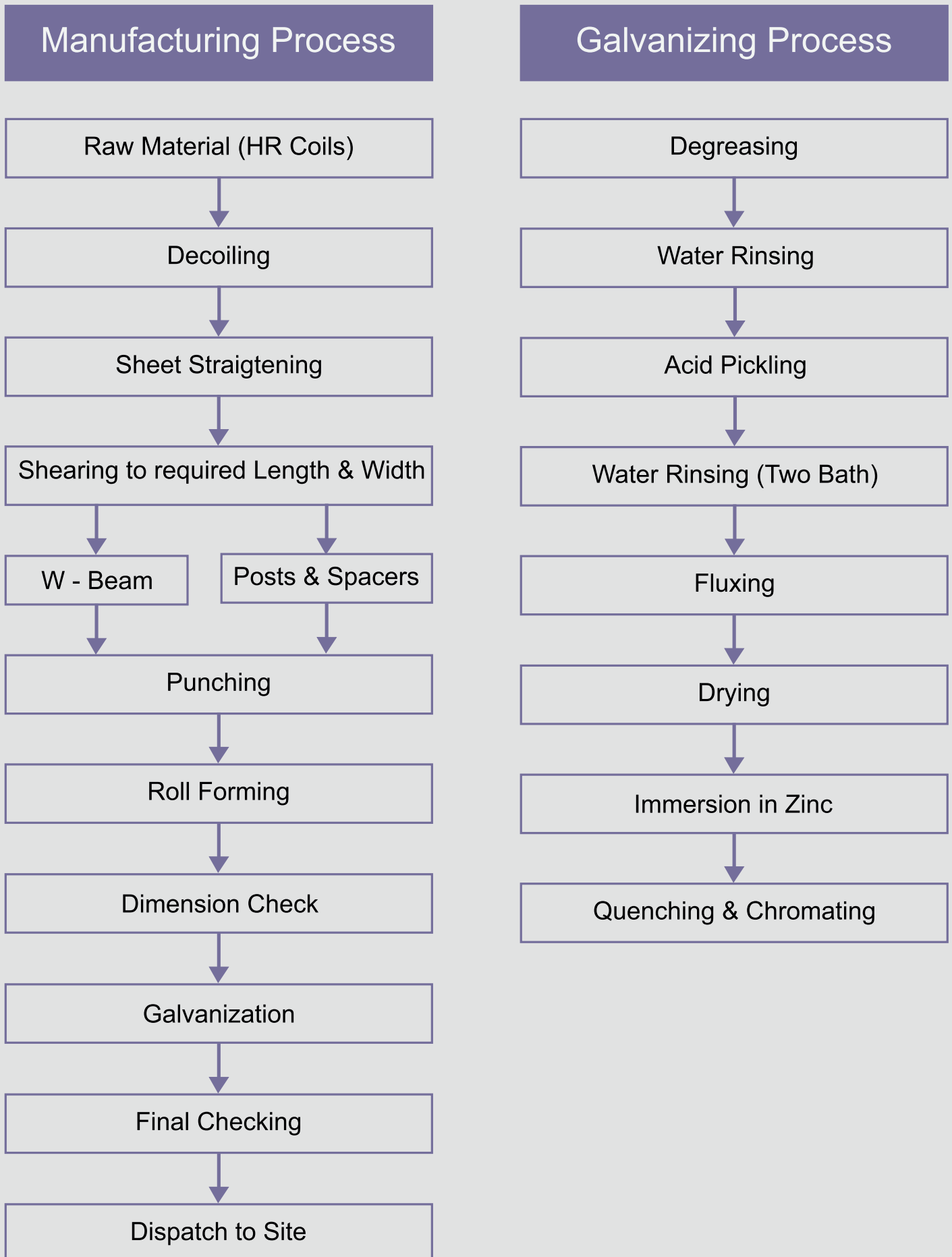
Quality Check

Engineers and experts of **IV Square Structure India Pvt. Ltd.** scrutinize each process carefully in order to ensure outstanding quality and on-schedule delivery of products. The company has in-house testing lab to test the galvanized, mechanical and chemical properties of guardrails. The intention is to ensure that the regulatory requirements of governing authorities like National Highway Authority of India, State Transportation Departments & Ministries etc. are met in the process of guardrail production.

Understanding the benchmarks of expected quality and safety levels, IV Square Structure India Pvt. Ltd. strives to meet and ensure customer satisfaction with a motivated environment and friendly atmosphere. Our employees invest their skills, knowledge, experience and time in enhancing the value of stakeholders and customers with successful implementation and commissioning of projects. We abide by environmental ethics and consider ourselves responsible towards preserving nature. We provide infrastructural, engineering products and services with utmost safety and security.



Manufacturing and Galvanizing with the following Process



Strength

- One of the pioneers in manufacturing, galvanizing, commissioning products, services and Infra-structural set up.
- Backward integration of resources; self-owned dedicated in house manufacturing and galvanizing plants with world class technology.
- Manpower as an asset - our employees at I V Square Structure India Pvt. Ltd. possess rich experience, knowledge and on - site expertise in commissioning and implementation.
- Safety and Quality is our prime religion - We develop and deliver products ensuring a healthy and safe experience to our customers.
- Serving our clients with integrity, innovation, focus, customer services and safety oriented products for meeting construction, engineering and infra-structural needs.
- Manufacturing and Galvanizing capacity of our Plant is **350 km per year**.

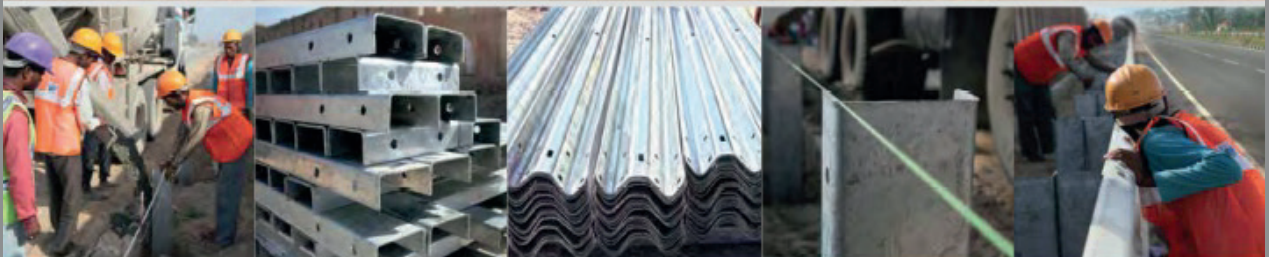
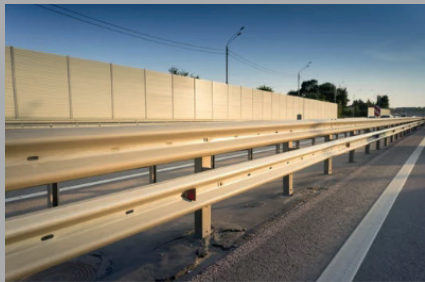


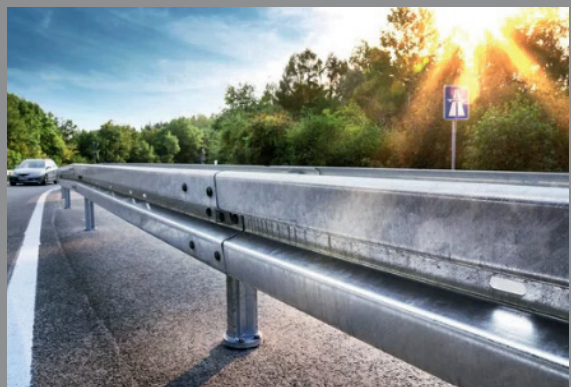
Photo Gallery



W Beam Crash Barrier



Fish tail / End Section

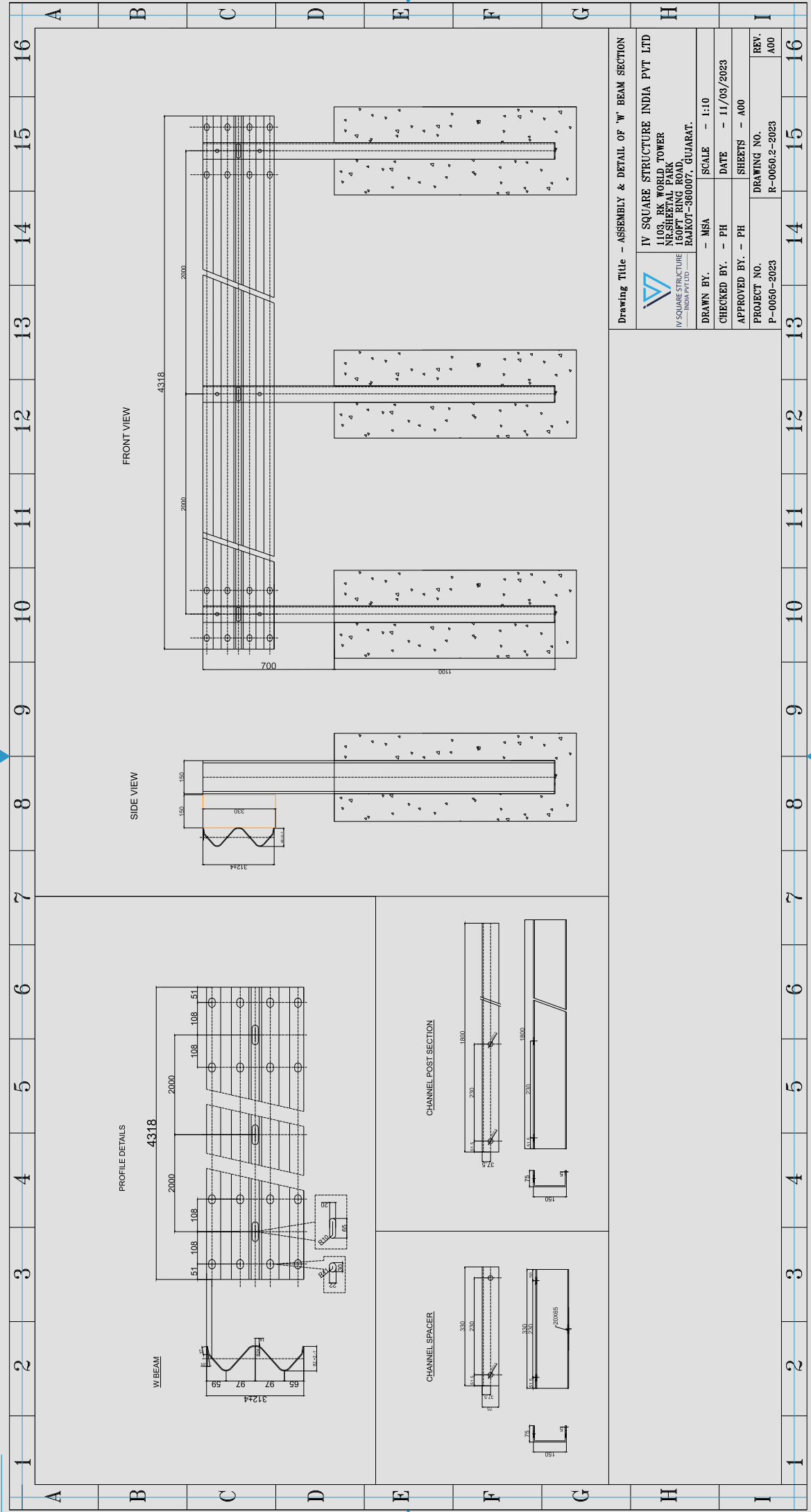


Fasteners



Thrie Beam Crash Barrier





Drawing Title - ASSEMBLY & DETAIL OF 'W' BEAM SECTION

IV SQUARE STRUCTURE INDIA PVT LTD
1103, RK WORLD TOWER
NRSHEETAL PARK
150FT RING ROAD,
RAJKOT-380007, GUJARAT.

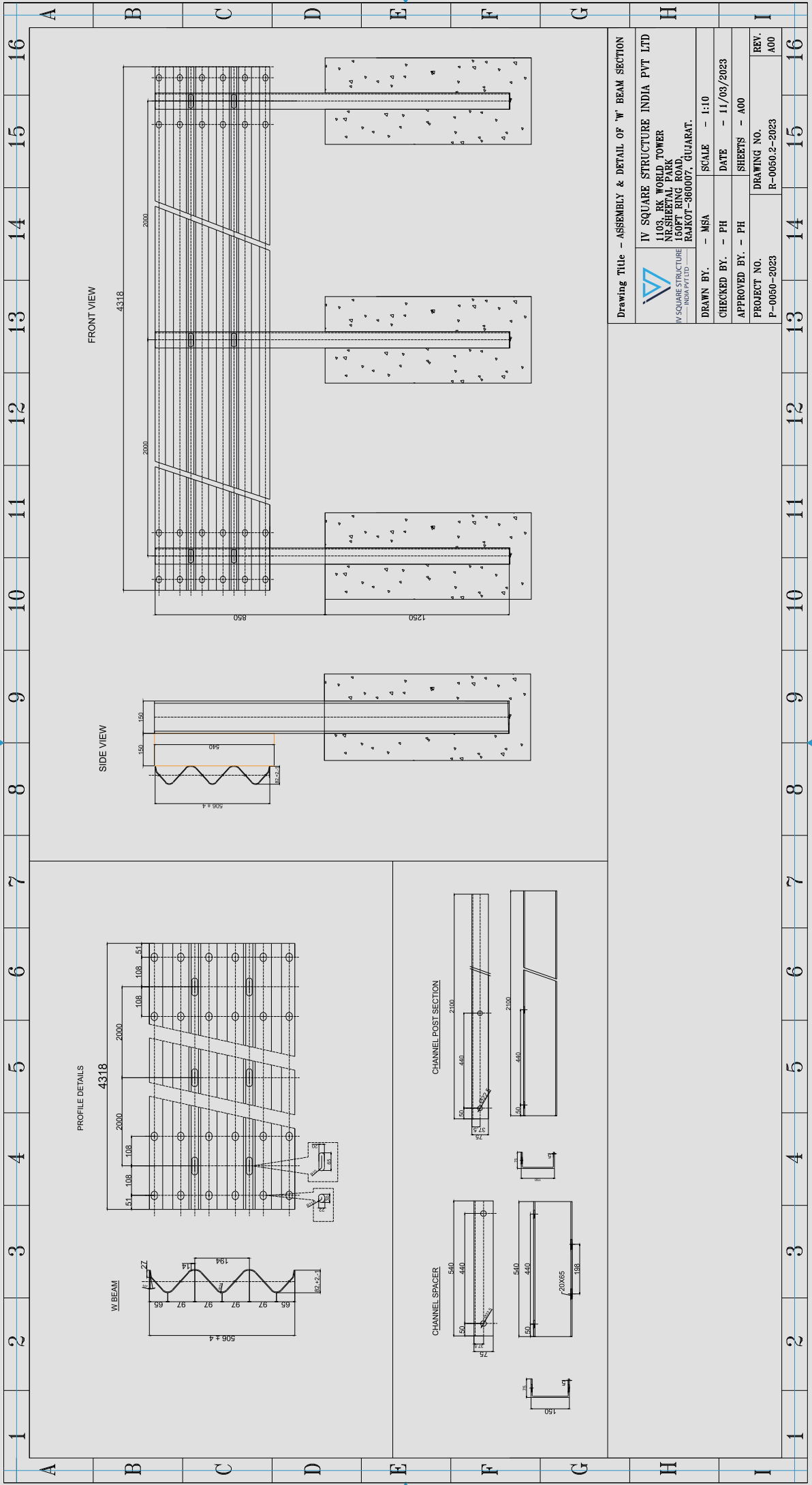
DRAWN BY. - MSA SCALE - 1:10
CHECKED BY. - PH DATE - 11/03/2023
APPROVED BY. - PH SHEETS - A00

PROJECT NO. P-0050-2023
DRAWING NO. R-0050.2-2023
REV. A00

W Beam Crash Barrier

- Isun Group offering W Beam Conforming of all standards & specifications prevailing in the Road infrastructure segment.
- "Isun Group" make W beam (w profiled) single side single beam of 3 mm section is having width of 312 mm and depth of corrugation as 83 mm, total length 4.318 M with 318 mm overlap (effective length 4M) as per MORTH specification.
- The Post channel section of 150mmx75mmx5mm thickx1500/1800/2000 mm long.
- Hot dip galvanized of zinc coating @ 550g/sqm.
- The Spacer channel section of 150mm x 75mm x 5mm thick x 546 mm long.
- Hot dip galvanized of zinc coating @ 550g/sqm.
- Hex bolt of M16:40 with nut bolts and washer.
Round bolt of M16:40 with nut bolts and washer





Drawing Title - ASSEMBLY & DETAIL OF 'W' BEAM SECTION

IV SQUARE STRUCTURE INDIA PVT LTD 1103, RK WORLD TOWER NE-SHEETAL PARK 150FT RING ROAD, RAMKOT-360007, GUJARAT.	
IV SQUARE STRUCTURE INDIA PVT LTD DRAWN BY. - MSA	SCALE - 1:10
CHECKED BY. - PH	DATE - 11/03/2023
APPROVED BY. - PH	SHEETS - A00
PROJECT NO. P-00650-2023	DRAWING NO. R-00650.2-2023
REV. A00	

Thrie Beam Crash Barrier

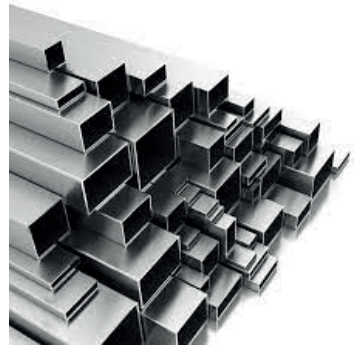
- "Isun Group" offering Thrie Beam Conforming of all standards & specifications prevailing in the Road infrastructure segment. Isun Group make Thrie beam (T-profiled) single side single beam of 3 mm section is having width of 510 mm and depth of corrugation as 83 mm, total length 4.318 M with 318 mm overlap (effective length 4M) as per MORTH specification.
- The Post channel section of 150mmx75mmx5mm thickx1500/1800/2000 mm long.
- Hot dip galvanized of zinc coating @ 550g/sqm.
- The Spacer channel section of 150mm x 75mm x 5mm thick x 546 mm long.
- Hot dip galvanized of zinc coating @ 550g/sqm.
- Hex bolt of M16:40 with nut bolts and washer.
- Round bolt of M16:40 with nut bolts and washer



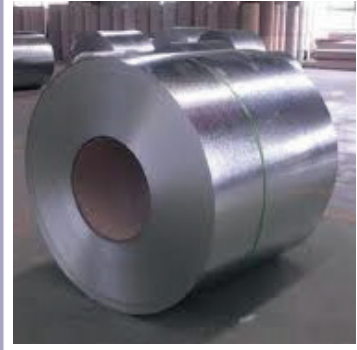
Other Products



C/Z Lip Section



Hollow section



Aluzinc Coated Steel



Solar mounting structure



MS HR Steel coil



Hot Dip Galvanize Service

Our Presence



IV SQUARE STRUCTURE
INDIA PVT LTD

IV Square Structure India Pvt. Ltd.

Head Office: 1103 R K World Tower, Nr. Shital Park Circle,
150 Ft. Ring Road, Rajkot-360007 (Gujarat)

Factory Address:

- Unit : 1** Nr. Ghanshyam Paper Mill, Padavala,
Dis. KotdaSangani, Rajkot-360024 (Guj.)
- Unit : 2** Plot No. 9, Nr. Pyor Pet Industry, Opp. Marshal Technocast,
SIDC Road, Shapar-Veraval, Rajkot-360026 (Guj.)
- Unit : 3** A 26 Swastik Industrial Park, Gatrad Bakrol Road,
Bakrol Ahemedabad-382430 (Guj.)

www.isunsolar.in

For Business Inquiry
Call: +91-8141650713 E-mail: info@isunsolar.in